



TEST REPORT



Report No. : KES-EM242540

Page 1 / 56

KES Co., Ltd.

#3002, #3503, #3701, 40, Simin-daero365beon-gil, Dongan-gu, Anyang-si, Gyeonggi-do, 14057, Republic of Korea

Tel : +82-31-425-6200, Fax : +82-31-381-3838

1. Client

Applicant : Hanwha Vision Co., Ltd

Applicant Address : 6, Pangyo-ro 319Beon-gil, Bundang-gu, Seongnam-si, Gyeonggi-do, Republic of Korea

2. Sample Description

Product name : NETWORK CAMERA

Model/Type No. : QND-C8023R

Variant Model : QND-C8013R

Manufacturer : 1. HANWHA VISION VIETNAM COMPANY LIMITED
2. D-TECH CO.,LTD.

Manufacturer Address : 1. Lot O-2, Que Vo Industrial Zone extended Area, Nam Son Ward, Bac Ninh City, Bac Ninh Province, Vietnam
2. 173-25, Saneop-ro, Gwonseon-gu, Suwon-si, Gyeonggi-do, Korea (Suwon Industrial Complex).

3. Date of Receipt : Jul. 24, 2024

4. Test date : Jul. 26, 2024 ~ Jul. 28, 2024

5. Date of Issue : Aug. 02, 2024

6. Test Results : In Compliance

Tested by

Reviewed by

Eun Gu, Jeon
EMC Test Engineer

Dong Hun, Jang
EMC Technical Manager

This test report is not related to KS Q ISO/IEC 17025 and KOLAS.

**REPORT REVISION HISTORY**

Date	Test Report No.	Revision History
Aug. 02, 2024	KES-EM242540	Issued

This report shall not be reproduced except in full, without the written approval of KES Co., Ltd. This document may be altered or revised by KES Co., Ltd. personnel only, and shall be noted in the revision section of the document. Any alteration of this document not carried out by KES Co., Ltd. will constitute fraud and shall nullify the document.



TABLE OF CONTENTS

1.0	General Product Description.....	4
1.1	Test Voltage & Frequency	6
1.2	Variant Model Differences	6
1.3	Device Modifications	6
1.4	Equipment Under Test	6
1.5	Support Equipments	6
1.6	External I/O Cabling.....	7
1.7	EUT Operating Mode(s).....	7
1.8	Configuration	8
1.9	Remarks when standards applied	9
1.10	Calibration Details of Equipment Used for Measurement	9
1.11	Test Facility	9
1.12	Laboratory Accreditations and Listings	9
2.0	Test Regulations	10
2.1	Conducted Emissions at Mains Power Ports.....	11
2.2	Conducted Emissions at Telecommunication Ports.....	12
2.3	Radiated Electric Field Emissions(Below 1 GHz).....	13
2.4	Radiated Electric Field Emissions(Above 1 GHz)	14
2.5	Harmonic Current Emissions	15
2.6	Voltage Fluctuations and Flicker.....	16
3.0	Criteria for compliance	17
3.1	Electrostatic Discharge	19
3.2	Radiated Electric Field Immunity	22
3.3	Electrical Fast Transients/Bursts	25
3.4	Surge Transients.....	27
3.5	Conducted Disturbance	30
3.6	Voltage Dips and Short Interruptions	33
APPENDIX A – TEST DATA		35
Conducted Emissions at Mains Power Ports		35
Conducted Emissions at Telecommunication Ports		37
Radiated Electric Field Emissions(Below 1 GHz)		38
Radiated Electric Field Emissions(Above 1 GHz)		39
Harmonic Current Emissions and Voltage Fluctuations and Flicker		40
Test Setup Photos and Configuration.....		43
Conducted Emissions at Mains Power Ports		43
Conducted Emissions at Telecommunication Ports		44
Radiated Electric Field Emissions(Below 1 GHz)		45
Radiated Electric Field Emissions(Above 1 GHz).....		46
Harmonic Current Emissions and Voltage Fluctuations and Flicker		47
Electrostatic Discharge		48
Radiated Electric Field Immunity		48
Electrical Fast Transients/Bursts		49
Surge Transients		49
Conducted Disturbance		50
Voltage Dips and Short Interruptions.....		50
EUT External Photographs.....		51
EUT Internal Photographs		52



1.0 General Product Description

Main Specifications of EUT are:

Highest Maximum Frequency	Above 108 MHz
---------------------------	---------------

Video	
Imaging Device	1/2.8" CMOS
Resolution	2592x1944, 2560x1440, 1920x1080, 1280x960, 1280x720, 800x600, 800x448, 720x576, 720x480, 640x480, 640x360, 320x240
Max. Framerate	H.265/H.264: Max. 30fps/25fps(60Hz/50Hz) (VDR on/off) MJPEG: Max. 30fps(@5MP Max. 5fps)
Min. Illumination	Color: 0.03Lux(F1.6, 1/30sec, 30IRE) BW: 0.003Lux(F1.6, 1/30sec, 30IRE), 0Lux(IR LED on) (TBD)
Video Out	USB: Micro USB Type B, 1280x720 for installation
Lens	
Focal Length (Zoom Ratio)	4.0mm fixed focal
Max. Aperture Ratio	F1.6
Angular Field of View	H: 80° / V: 59° / D: 102°
Min. Object Distance	0.5m (1.64ft)
Focus Control	Fixed
Lens Type	Fixed IRIS
Mount Type	M12
Pan / Tilt / Rotate	
Pan / Tilt / Rotate Range	0°~350° / 0°~70° / 0°~355°
Operational	
Camera Title	Displayed up to 85 characters
Day & Night	Auto(ICR)
Backlight Compensation	BLC, WDR, SDR
Wide Dynamic Range	120dB
Digital Noise Reduction	WiseNR II (Based on AI engine) SSNR V
Motion Detection	8ea, 8point polygonal zones
Privacy Masking	32ea, 4point quadrangle zones - Color: Gray/Green/Red/Blue/Black/White Dynamic Privacy Mask - Mosaic
Gain Control	Low / Middle / High
White Balance	ATW / AWC / Manual / Indoor / Outdoor
LDC	Support
Electronic Shutter Speed	Minimum / Maximum / Anti flicker (1/5~1/25,000sec) Prefer shutter control(Based on AI engine)
Video Rotation	Flip, Mirror, Halfway view(90°/270°)
Analytics	Classified object type: Person/Vehicle(Type:car/bus/truck/motorcycle/bicycle) Attributes: Person(Upper/lower clothes color), Vehicle(Type:car/bus/truck/motorcycle/bicycle and color) Support DetectionShot Analytics events based on AI engine - Motion detection*, Object detection, Virtual line*(Crossing/Direction), Virtual area*(Loitering/Intrusion/Enter/Exit) Analytics events - Defocus detection, Tampering, Virtual area(Appear/Disappear) * Some of the video analytics only works with people and vehicle detection
Business Intelligence	Based on AI engine: People counting, Vehicle counting, Queue management, Heatmap
Alarm I/O	Input 1ea / Output 1ea * Alarm I/O is supported through an optional cable(SPP-C7200)
Alarm Triggers	Analytics, Network disconnect, Alarm input
Alarm Events	When alarm trigger occurred - File upload(image) : e-mail/FTP - Notification : e-mail - Recording : SD/SDHC/SDXC or NAS recording at event triggers - Alarm output - Handover(PTZ preset, Send message by HTTP/HTTPS/TCP) - MQTT: publication
Audio In	Built-in MIC
Light Type	IR LED (850nm)
Light Viewable Length	25m(82.02ft) (TBD)
IR Wavelength	long-life 850 nm IR LED



Report No. : KES-EM242540

Network	
Ethernet	RJ-45(10/100BASE-T)
Video Compression	H.265/H.264: Main/High, MJPEG
Smart Codec	Manual(Sea area), WiseStreamIII(Based on AI engine)
Bitrate Control	H.264/H.265: CBR or VBR MJPEG: VBR
Streaming	Unicast(20 users) / Multicast Multiple streaming(Up to 5 profiles)
Protocol	IPv4, IPv6, TCP/IP, UDP/IP, RTP(UDP), RTP(TCP), RTCP, RTSP, NTP, HTTP, HTTPS, SSL/TLS, DHCP, FTP, SMTP, ICMP, IGMP, SNMPv1/v2c/v3(MIB-2), ARP, DNS, DDNS, QoS, UPnP, Bonjour, LLDP, CDP, SRTMP (TCP, UDP Unicast), MQTT
Application Programming Interface	ONVIF Profile S/G/T/M SUNAPI(HTTP API)
Security	
OS / Firmware Protect	Secure boot, Signed firmware, Firmware encryption
User authentication	Digest Authentication, Prevent brute-force attack
Network authentication	802.1X Authentication(EAP-TLS, EAP-LEAP, EAP-PEAP MSCHAPv2)
Secure Communication	HTTPS, SRTP, WSS(Websocket secure)
Access Control	Access control based on IP address
Data Protect	Authentication information encryption, ZIP compression encryption
Audit	User Access/System/Event log management
Device ID	Device Certificate(Hanwha Private Root CA)
Secure Storage	SDcard partition encrypt
General	
Webpage Language	English, Korean, Simplified Chinese, Traditional Chinese, French, Italian, Spanish, German, Japanese, Russian, Portuguese, Czech, Polish, Turkish, Dutch, Hungarian, Greek
Edge Storage	Micro SD/SDHC/SDXC 1slot 256GB
Memory	2GB RAM, 1GB Flash
Environmental & Electrical	
Operating Temperature / Humidity	-10°C~+45°C(+14°F~+113°F) / 0~95% RH(non-condensing)
Storage Temperature / Humidity	-30°C~+60°C(-22°F~+140°F) / 0~95% RH
Input Voltage	PoE(IEEE802.3af, Class3)
Power Consumption	PoE: Max 8.1W, typical 4.0W
Mechanical	
Color / Material	White / Plastic Bubble : Hard-coated dome
RAL Code	RAL9003
Product Dimensions / Weight	ø110x90mm(ø4.33x3.54"), 317.0g(0.70 lb)
Compatible Conduit hole / Gang	SBD-110GP1 : Single, Double, 4" Octagon (Sold separately)
Certifications & Standards	
EMC	FCC 47 CFR 15 Subpart B Class A ICES-3(A)/NMB-3(A) CE/UKCA - EN 55032 Class A, EN 50130-4, EN 61000-3-2, EN 61000-3-3 VCCI CISPR 32 Class A RCM AS/NZS CISPR 32 Class A KS C 9832 Class A, KS C 9835
Safety	UL 62368-1, CAN/CSA C22.2 NO. 62368-1 IEC/EN 62471
Environment	IEC/EN 63000
Compatible Models	
Hanging Adaptor	SBP-120HMMW
Back Box	SBV-140BW
Ceiling Mount (Assy)	SBP-300CMW1/900CMW, SBP-150CMI/300CMI, SBP-300CMTW, SBP-300CMTS
Wall Mount	SBP-125WMW1, SBP-300WMW/WMW1, SBP-390WMW2
Pole Mount	SBD-140PMW, SBP-300PMW2, SBD-140PMB
In-ceiling Mount	SHD-1200FPW
Corner Mount	SBP-300KMW1, SBD-140KMB
Parapet Mount	SBP-300LMW, SBP-156LMW1
Tilt Mount	SBV-140TMW
Cabinet	SBP-300NBW
Gang Plate	SBD-110GP1
Other Compatible Models	SPP-C7200 (Alarm Cable)
DORI (EN62676-4 standard)	
Detect (25PPM/ 8PPF)	61.8m(202.7ft)
Observe (63PPM/ 19PPF)	24.7m(81.1ft)
Recognize (125PPM/ 38PPF)	12.4m(40.5ft)
Identify (250PPM/ 76PPF)	6.2m(20.3ft)
Ver	
Ver	202407



1.1 Test Voltage & Frequency

Unless indicated otherwise on the individual data sheet or test results, the test voltage and frequency was as indicated below.

☒ AC 230 V, 50 Hz

1.2 Variant Model Differences

Addition of a simple derivative model due to the difference in fixed lenses
(No electronics in the lens)

1.3 Device Modifications

Not applicable

1.4 Equipment Under Test

Description	Model Number	Serial Number	Manufacturer	Remarks
NETWORK CAMERA	QND-C8023R	-	HANWHA VISION VIETNAM COMPANY LIMITED	EUT

1.5 Support Equipments

Description	Model Number	Serial Number	Manufacturer	Remarks
Laptop	P95G001	9JM8HT2	DELL INC.	-
Laptop Adapter	HA65NM130	-	Chicony Power Technology(Suzhou)Co.,Ltd.	-
Alarm	-	-	-	-
Button Alarm	-	-	-	-
Micro SD Card	-	-	SanDisk	16 GB
PoE Injector	MA-INJ-4		Changzhou Wujin Hong Guang radio Factory Co.,LTD	-
Headset	K550	-	Britz®	-
Cell Phone	SM-N960N	-	Samsung Electronics Co., Ltd.	-



1.6 External I/O Cabling

Start		END		Cable Spec.	
Description	I/O Port	Description	I/O Port	Length	Shield
NETWORK CAMERA (EUT)	RJ-45 (PoE)	PoE Injector	RJ-45 (PoE)	3.1	U
	7 Pin (Alarm/Audio)	Headset	Line	2.2	U
		Alarm	Line	3.5	U
		Button Alarm	Line	3.5	U
	Micor SD Slot	Micor SD Card	Micor SD Slot	-	-
PoE Injector	RJ-45 (LAN)	Laptop	RJ-45	3.1	U
Laptop	DC Jack	Laptop Adapter	Line	1.4	U
	3.5 mm	Cell Phone	3.5 mm	1.2	U

* Unshielded = U, Shielded = S

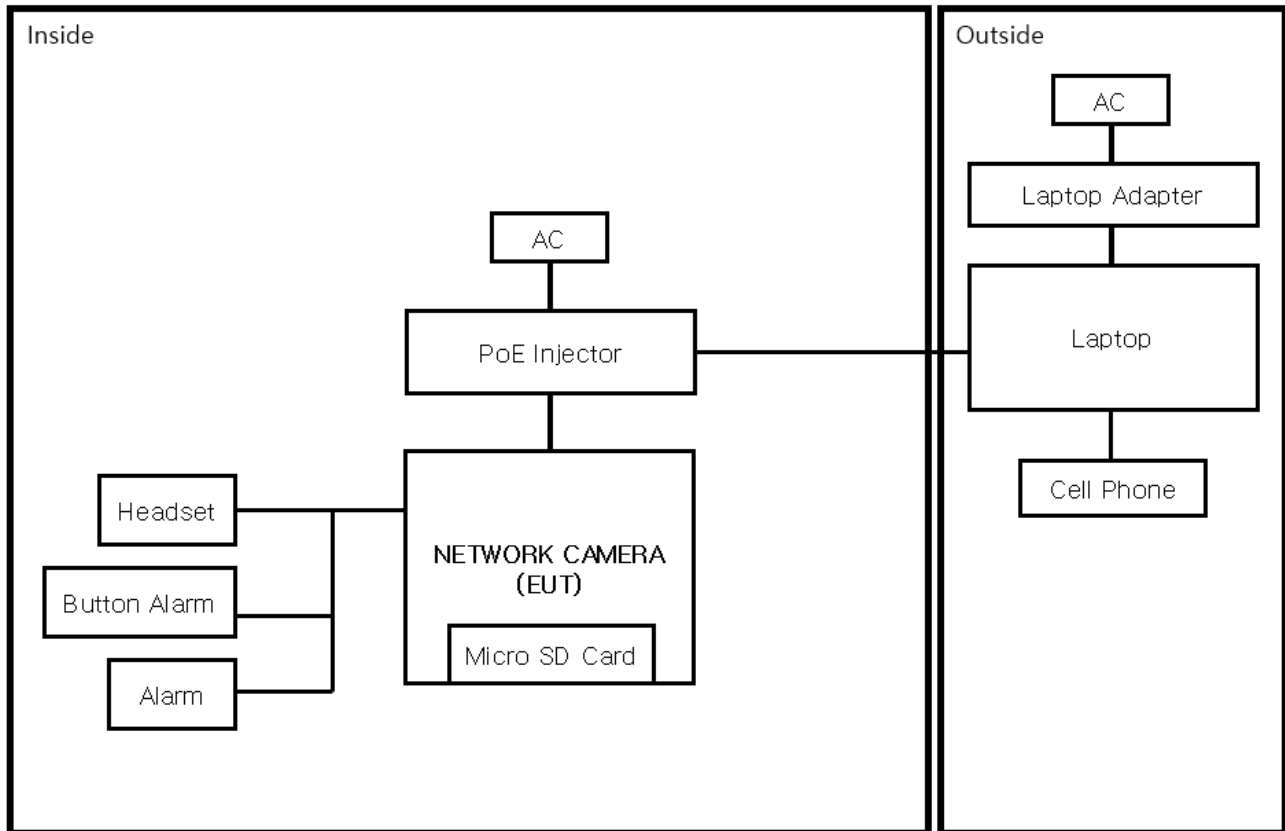
1.7 EUT Operating Mode(s)

Test mode	Normal operating	Test Voltages
Operating	<ul style="list-style-type: none">- Monitoring EUT Using Web Viewer, Ping Test- Check Audio Port Behavior Through Headset- When the Button Alarm is pressed, make sure the Alarm is working- Check the files stored on the Micro SD Card after testing	AC 230 V, 50 Hz

EUT Test operating S/W		
Name	Version	Manufacture Company
Web Viewer	-	Hanwha Vision Co., Ltd



1.8 Configuration





1.9 Remarks when standards applied

- The USB port was excluded from the test as a port for administrators.
 - It receives PoE power, and the PoE port is considered a wired network port.
- Test items related to the power port are not applicable.

1.10 Calibration Details of Equipment Used for Measurement

Test equipment and test accessories are calibrated on regular basis. The maximum time between calibrations is one year or what is recommended by the manufacturer, whichever is less.

1.11 Test Facility

The measurement facility is located at 473-21, Gayeo-ro, Yeosu-si, Gyeonggi-do, 12658, Korea, Republic of. The sites are constructed in conformance with the requirements of ANSI C63.4a-2017 and CISPR 16-1-4:2019

1.12 Laboratory Accreditations and Listings

Country	Agency	Scope of Accreditation	Logo
KOREA	RRA	EMI (3 m & 10 m Semi-Anechoic Chamber and conducted test site) EMS (ESD, RS, EFT/Burst, Surge, CS, Magnetic, Dips and interruptions)	 KR0100
International	KOLAS	EMI (3 m & 10 m Semi-Anechoic Chamber and conducted test site) EMS (ESD, RS, EFT/Burst, Surge, CS, Magnetic, Dips and interruptions)	 KT489
USA	FCC	3 m & 10 m Semi-Anechoic Chamber Conducted test site to perform FCC Part 15/18 measurements.	 KR0100
Canada	ISED	3 m & 10 m Semi-Anechoic Chamber and Conducted test site	 23298
JAPAN	VCCI	EMI (3 m & 10 m Semi-Anechoic Chamber and conducted test site)	 C-20136, T-20137, R-20181, G-20176
Europe	TÜV SÜD	EMI (3 m & 10 m Semi-Anechoic Chamber and conducted test site) EMS (ESD, RS, EFT/Burst, Surge, CS, Magnetic, Dips and interruptions)	 CARAT 001633 0008



2.0 Test Regulations

The emissions tests were performed according to following regulations:

☒ **EMC – Directive 2014/30/EU**

☒ EN 55032:2015/A11:2020

☒ Class A

☐ Class B

☒ EN 50130-4:2011/A1:2014

☒ **EMC –Regulations 2016**

☒ EN 55032:2015/A11:2020

☒ Class A

☐ Class B

☒ EN 50130-4:2011/A1:2014





2.1 Conducted Emissions at Mains Power Ports

Test Date

N/A

Test Location

Electro wave Shieldroom #6

Test Equipment

Used	Description	Model Number	Manufacturer	Serial Number	Cal. Due
<input type="checkbox"/>	EMI Test S/W	EMC32	R & S	9.12.00	-
<input type="checkbox"/>	EMI TEST RECEIVER	ESR3	R & S	101783	11, 08, 2024
<input type="checkbox"/>	LISN	ENV216	R & S	101787	11, 08, 2024
<input type="checkbox"/>	LISN	ENV216	R & S	101137	01, 10, 2025
<input type="checkbox"/>	PULSE LIMITER	ESH3-Z2	R & S	101915	11, 08, 2024

Test Conditions

Temperature:

°C

Relative Humidity:

% R.H.

Frequency Range of Measurement

150 kHz to 30 MHz

Instrument Settings

IF Band Width: 9 kHz

Test Results

The requirements are:

- ☐ PASS
☐ NOT PASS
☒ NOT APPLICABLE

RemarksRefer to 'Remarks when standards applied'.



2.2 Conducted Emissions at Telecommunication Ports

Test Date

Jul. 26, 2024

Test Location

Electro wave Shieldroom #6

Test Equipment

Used	Description	Model Number	Manufacturer	Serial Number	Cal. Due
<input checked="" type="checkbox"/>	EMI Test S/W	EMC32	R & S	9.12.00	-
<input checked="" type="checkbox"/>	EMI TEST RECEIVER	ESR3	R & S	101783	11, 08, 2024
<input checked="" type="checkbox"/>	LISN	ENV216	R & S	101787	11, 08, 2024
<input type="checkbox"/>	LISN	ENV216	R & S	101137	01, 10, 2025
<input checked="" type="checkbox"/>	PULSE LIMITER	ESH3-Z2	R & S	101915	11, 08, 2024
<input checked="" type="checkbox"/>	8-WIRE ISN CAT3,5	ENY81	R & S	100174	11, 09, 2024
<input type="checkbox"/>	8-WIRE ISN CAT6	ENY81-CAT6	R & S	101666	03, 06, 2025
<input type="checkbox"/>	ISN	ISN S8	SCHWARZBECK	ISN-S8-0019	03, 05, 2025

Test Conditions

Temperature: (24,2 ± 0,1) °C

Relative Humidity: (50,2 ± 0,1) % R.H.

Frequency Range of Measurement

150 kHz to 30 MHz

Instrument Settings

IF Band Width: 9 kHz

Test Results

The requirements are:

- ☒ PASS
☐ NOT PASS
☐ NOT APPLICABLE

RemarksSee Appendix A for test data.



2.3 Radiated Electric Field Emissions(Below 1 GHz)

Test Date

Jul. 28, 2024

Test Location

☐ OPEN AREA TEST SITE #2☒ SEMI ANECHOIC CHAMBER #4(10 m)

Test Equipment

Used	Description	Model Number	Manufacturer	Serial Number	Cal. Due
<input checked="" type="checkbox"/>	EMI Test S/W	EP5/RE	TOYO Corporation	6.0.0	-
<input checked="" type="checkbox"/>	EMI TEST RECEIVER	ESU26	R & S	100551	02, 13, 2025
<input checked="" type="checkbox"/>	AMPLIFIER	SCU 01	R & S	100603	11, 08, 2024
<input checked="" type="checkbox"/>	TRILOG-BROADBAND ANTENNA	VULB9163	Schwarzbeck	715	11, 17, 2024
<input checked="" type="checkbox"/>	ATTENUATOR	8491A	HP	32173	02, 13, 2025

Test Conditions

Temperature: (23,9 ± 0,1) °C

Relative Humidity: (46,0 ± 0,1) % R.H.

Frequency Range of Measurement

30 MHz to 1 GHz

Instrument Settings

IF Band Width: 120 kHz

Test Results

The requirements are:

- ☒ PASS
☐ NOT PASS
☐ NOT APPLICABLE

Remarks

See Appendix A for test data.



2.4 Radiated Electric Field Emissions(Above 1 GHz)

Test Date

Jul. 27, 2024

Test Location

SEMI ANECHOIC CHAMBER #3

Test Equipment

Used	Description	Model Number	Manufacturer	Serial Number	Cal. Due
<input checked="" type="checkbox"/>	EMI Test S/W	EP5/RE	TOYO Corporation	6.0.0	-
<input checked="" type="checkbox"/>	EMI TEST RECEIVER	ESR7	R & S	101190	07, 31, 2024
<input checked="" type="checkbox"/>	PREAMPLIFIER	8449B	AGILENT	3008A01967	03, 05, 2025
<input checked="" type="checkbox"/>	ATTENUATOR	8491A	HP	35496	02, 13, 2025
<input checked="" type="checkbox"/>	DOUBLE RIDGED HORN ANTENNA	SAS-571	A.H.SYSTEM,INC	781	03, 05, 2025

Test Conditions

Temperature: (24,2 ± 0,1) °C

Relative Humidity: (45,6 ± 0,1) % R.H.

Frequency Range of Measurement

1 GHz to 6 GHz

Instrument Settings

IF Band Width: 1 MHz

Test Results

The requirements are:

- ☒ PASS
☐ NOT PASS
☐ NOT APPLICABLE

RemarksSee Appendix A for test data.



2.5 Harmonic Current Emissions

Test Date

N/A

Test Location

Electro wave Shieldroom #7

Test Equipment

Used	Description	Model Number	Manufacturer	Serial Number	Cal. Due
<input type="checkbox"/>	EMI Test S/W	net.control	EM TEST	2.1.4	-
<input type="checkbox"/>	DIGITAL POWER ANALYZER	DPA 500N	EM TEST	V1024106759	03, 28, 2025
<input type="checkbox"/>	POWER SOURCE	ACS 500N6	EM TEST	V1024106760	-

Test Conditions

Temperature:

°C

Relative Humidity:

% R.H.

Classification of Equipment for Harmonic Current Emissions

- ☐ Class A
- ☐ Class B
- ☐ Class C(Below 25 W)
- ☐ Class C(Above 25 W)
- ☐ Class D

Test Results

The requirements are:

- ☐ PASS
- ☐ NOT PASS
- ☒ NOT APPLICABLE

RemarksRefer to 'Remarks when standards applied'.



2.6 Voltage Fluctuations and Flicker

Test Date

N/A

Test Location

Electro wave Shieldroom #7

Test Equipment

Used	Description	Model Number	Manufacturer	Serial Number	Cal. Due
<input type="checkbox"/>	EMI Test S/W	net.control	EM TEST	2.1.4	-
<input type="checkbox"/>	DIGITAL POWER ANALYZER	DPA 500N	EM TEST	V1024106759	03, 28, 2025
<input type="checkbox"/>	POWER SOURCE	ACS 500N6	EM TEST	V1024106760	-

Test Conditions

Temperature:

°C

Relative Humidity:

% R.H.

Test Results

The requirements are:

- ☐ PASS
☐ NOT PASS
☒ NOT APPLICABLE

RemarksRefer to 'Remarks when standards applied'.



3.0 Criteria for compliance

Criteria for compliance was based on the following guidelines:

EN 50130-4:2011 Alarm systems-Part 4: Electromagnetic compatibility Product family standard: Immunity requirements for components of fire, intruder and social alarm systems

The variety and the diversity of the apparatus within the scope of this document makes it difficult to define precise criteria for the evaluation of the immunity test results.

If as a result of the application of the tests defined in this standard, the apparatus

becomes dangerous or unsafe then the apparatus shall be deemed to have failed the test.

A functional description and a definition of performance by the manufacture and noted in the test report, based on the following criteria:

Electrostatic discharge

There shall be no damage, malfunction or change of status due to the conditioning.

Flickering of an indicator during the application of discharge is permissible, providing that is no residual change in the EUT or any change in outputs, which could be interpreted by associated equipment as a change.

Radiated electromagnetic fields

There shall be no damage, malfunction or change of status due to the conditioning.

Flickering of an indicator during the application of discharge is permissible, providing which could be interpreted by associated equipment as a change, and no such

Flickering of indicators occurs at a field strength of 3 V/m.

For components of CCTV systems, where the picture is allowed at 10 V/m, providing.

(a) there is no permanent damage or change to EUT

(e.g. no corruption of memory or changes to programmable setting etc.)

(b) at 3 V/m, any deterioration of the picture is so minor that the system could still be used; and

(c) there is no observable deterioration of the picture at 1 V/m.



Fast transient burst / slow high energy voltage surge

There shall be no damage, malfunction or change of status due to the conditioning.

Flickering of an indicator during the application of discharge is permissible, providing

That there is no residual is permissible, providing that there is no residual change in the EUT or any change in outputs, which could be interpreted by associated equipment as a change.

Conducted RF immunity

There shall be no damage, malfunction or change of status due to the conditioning.

Flickering of an indicator during the application of discharge is permissible, providing

That there is no residual is permissible, providing that there is no residual change in the EUT or any change in outputs, which could be interpreted by associated equipment as a change, and no such flickering of indicators oeuvres at $U = 130 \text{ dB}\mu\text{V}$.

For component of CCTV systems, where the status is monitored by observing the TV picture, then deterioration of the picture is allowed at $U = 140 \text{ dB}\mu\text{V}$, providing:

- (a) there is no permanent damage or change to the EUT
(e.g. no corruption of memory or changes to programmable settings etc.)
- (b) at $U = 130 \text{ dB}\mu\text{V}$, any deterioration of the picture is so minor that the system could still be used; and
- (c) there in no observable deterioration of the picture at $U = 120 \text{ dB}\mu\text{V}$.

Voltage dip/interruption / Voltage variation

There shall be no damage, malfunction or change of status due to the conditioning.

Flickering of an indicator during the conditioning is permissible, providing that there is no residual change in the EUT or any change in outputs, which could be interpreted by associated equipment as a change. The EUT shall meet the acceptance criteria for the functional test, after the conditioning.



3.1 Electrostatic Discharge

Reference Standard

EN 61000-4-2

Test Date

Jul. 26, 2024

Test Location

EMS-ESD: SHIELD ROOM #6

Test Equipment

Used	Description	Model Number	Manufacturer	Serial Number	Cal. Due
<input checked="" type="checkbox"/>	ESD SIMULATOR	ESS-2000	Noise Ken	ESS01Z0454	01, 30, 2025
<input checked="" type="checkbox"/>	HCP	-	KES	-	-
<input checked="" type="checkbox"/>	VCP	-	Noise Ken	-	-

Test Conditions

Temperature: (24,2 ± 0,1) °C
Relative Humidity: (50,2 ± 0,1) % R.H.
Atmospheric Pressure: (99,7 ± 0,1) kPa

Test Specifications

Discharge Factor: ≥ 1 s

Discharge Impedance: 330 ohm / 150 pF

Kind of Discharge: Air, Contact (direct and indirect)

Polarity: Positive and Negative

Number of Discharge: 10 at all locations for Air discharge
10 at all locations for Contact discharge

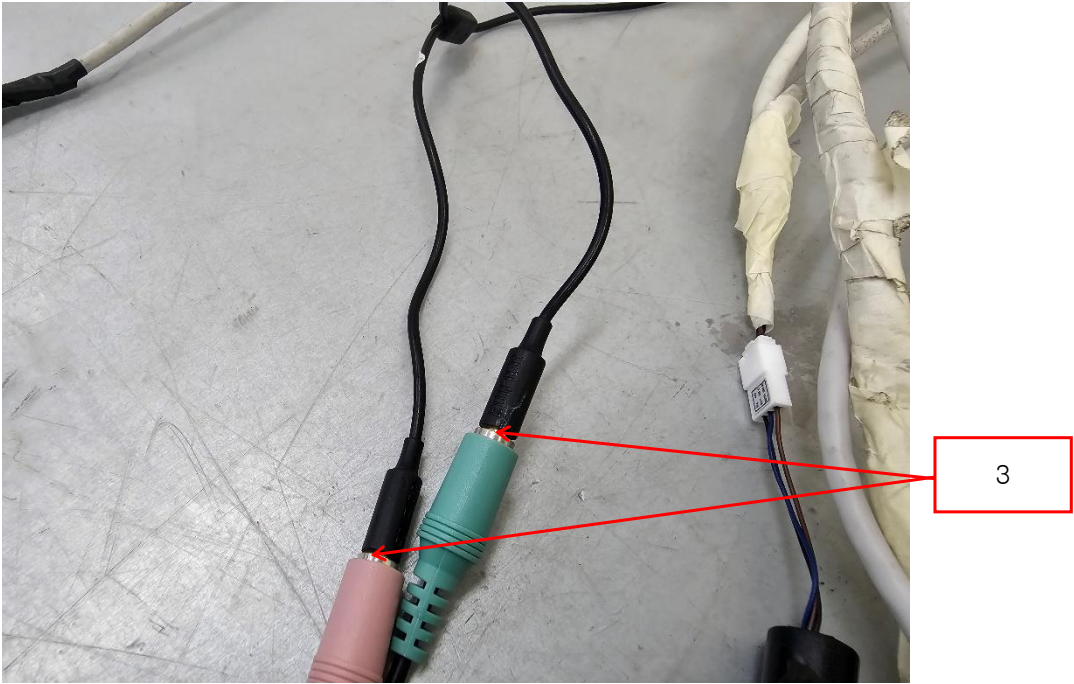
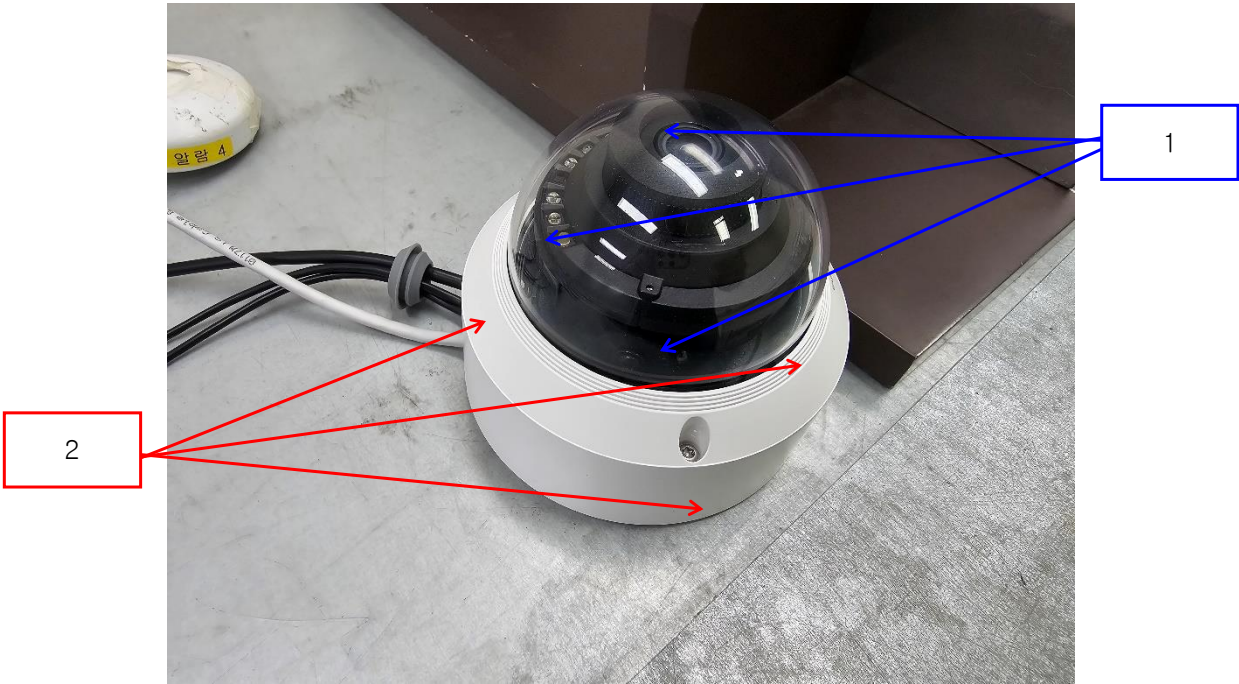
Discharge Voltage:	Contact	Air	HCP	VCP
	<input type="checkbox"/> 2 kV	<input checked="" type="checkbox"/> 2 kV	<input type="checkbox"/> 2 kV	<input type="checkbox"/> 2 kV
	<input type="checkbox"/> 4 kV	<input checked="" type="checkbox"/> 4 kV	<input type="checkbox"/> 4 kV	<input type="checkbox"/> 4 kV
	<input checked="" type="checkbox"/> 6 kV	<input type="checkbox"/> 6 kV	<input checked="" type="checkbox"/> 6 kV	<input checked="" type="checkbox"/> 6 kV
	<input type="checkbox"/> 8 kV	<input checked="" type="checkbox"/> 8 kV	<input type="checkbox"/> 8 kV	<input type="checkbox"/> 8 kV
	<input type="checkbox"/> 15 kV	<input type="checkbox"/> 15 kV	<input type="checkbox"/> 15 kV	<input type="checkbox"/> 15 kV

Notes: HCP: Horizontal coupling plane
VCP: Vertical coupling plane

Required Performance Criteria: ☒ Complied



Location of Discharge:



**Test Data****Indirect Discharge**

No.	Test Point	Discharge Method	Observations	Remarks
1	HCP Contact	Contact Discharge	Complied	-
2	VCP Contact	Contact Discharge	Complied	-

Direct Discharge

No.	Test Point	Discharge Method	Observations	Remarks
1	Enclosure 1	Air Discharge	Complied	-
2	Enclosure 2	Contact Discharge	Complied	-
3	Port	Contact Discharge	Complied	-

Note: "Blank" = Not performed

Observations:

Complied – No degradation of function

Test Results

- ☒ PASS Required Performance Criteria
☐ NOT PASS Required Performance Criteria

Remarks

PASS Required Performance Criteria



3.2 Radiated Electric Field Immunity

Reference Standard

EN IEC 61000-4-3

Test Date

Jul. 27, 2024

Test LocationEMS-RS: ☐ SEMI ANECHOIC CHAMBER #2 ☒ SEMI ANECHOIC CHAMBER #3**Test Equipment**

Used	Description	Model Number	Manufacturer	Serial Number	Cal. Due
<input checked="" type="checkbox"/>	EMS Test S/W	EMC32	R & S	10.10.02	-
<input checked="" type="checkbox"/>	SIGNAL GENERATOR	SMB 100A	Rohde & Schwarz	108252	07, 31, 2024
<input checked="" type="checkbox"/>	HIGH POWER DUAL AMP	SSA532	SUNGSAN	SSA532-001	-
<input checked="" type="checkbox"/>	POWER METER	E4419B	Agilent	GB40203000	02, 13, 2025
<input checked="" type="checkbox"/>	AVERAGE POWER SENSOR	E9301A	Agilent	MY52170007	02, 13, 2025
<input checked="" type="checkbox"/>	AVERAGE POWER SENSOR	E9301A	Agilent	MY41498669	02, 13, 2025
<input checked="" type="checkbox"/>	STACKED DOUBLE LOG-PER- ANTENNA	STPL9128 E	Schwarzbeck	9128ES-121	-
<input checked="" type="checkbox"/>	DOUBLE RIDGED HORN ANTENNA	SAS-571	A.H.SYSTEM,INC	781	03, 05, 2025

Test Conditions

Temperature: (24,2 ± 0,2) °C
Relative Humidity: (46,5 ± 0,1) % R.H.
Atmospheric Pressure: (100,0 ± 0,1) kPa



Test Specifications

Antenna Polarization: Horizontal & vertical unless indicated otherwise

Antenna Distance: ☒ 3 m

Field Strength: ☐ 1 V/m ☐ 3 V/m
☒ 10 V/m

Frequency Range: ☐ 80 MHz to 1 GHz ☐ 1,4 GHz to 2,7 GHz
☒ 80 MHz to 2,7 GHz

Modulation: ☒ AM, 80 %, 1 kHz sine wave
☒ PM, 1 Hz (0,5 s ON : 0,5 s OFF)

Frequency step: ☒ 1 % step

Dwell Time: ☐ 1 s ☒ 3 s

of Sides Radiated: ☒ 4

Required Performance Criteria: ☒ Complied

**Test Data**

Side Exposed	Observations	
	Horizontal	Vertical
Front	Complied	Complied
Right	Complied	Complied
Back	Complied	Complied
Left	Complied	Complied

Note: "Blank" = Not performed

Observations:

Complied – No degradation of function

Test Results

- ☒ PASS Required Performance Criteria
☐ NOT PASS Required Performance Criteria

Remarks

PASS Required Performance Criteria



3.3 Electrical Fast Transients/Bursts

Reference Standard

EN 61000-4-4

Test Date

Jul. 28, 2024

Test Location

EMS-EFT: Electro wave Shieldroom #7

Test Equipment

Used	Description	Model Number	Manufacturer	Serial Number	Cal. Due
<input checked="" type="checkbox"/>	EMS Test S/W	iec.control	EM TEST	5.4.8	-
<input checked="" type="checkbox"/>	ULTRA COMPACT SIMULATOR	UCS 500N7	EM TEST	P1608172950	11, 09, 2024
<input checked="" type="checkbox"/>	MOTOR VARIAC	MV2616	EM TEST	P1552169719	11, 09, 2024
<input checked="" type="checkbox"/>	CAPACITIVE COUPLING CLAMP	HFK	EM TEST	P1633183115	11, 10, 2024

Test Conditions

Temperature: (24,8 ± 0,1) °C
Relative Humidity: (49,8 ± 0,1) % R.H.
Atmospheric Pressure: (100,1 ± 0,1) kPa

Test Specifications

Pulse Amplitude & Polarity:
(AC Power Lines) ☐ ± 1.0 kV ☐ ± 2.0 kV
☐ ± 4.0 kV

Pulse Amplitude & Polarity:
(Other supply / Signal Lines) ☐ ± 0.5 kV ☒ ± 1.0 kV
☐ ± 2.0 kV

Burst Period: ☒ 300 ms ☐ 2 s

Repetition Rate: ☐ 5 klz ☒ 100 klz

Duration of Test Voltage: ☒ ≥ 1 min

Required Performance Criteria: ☒ Complied

**Test Data**☐ Input a.c. power ports – Coupling/Decoupling Network used

Mode of Application	Observations	
	(+) Burst (kV)	(-) Burst (kV)
-	-	-

☐ Input d.c. power ports – Coupling/Decoupling Network used

Mode of Application	Observations	
	(+) Burst (kV)	(-) Burst (kV)
-	-	-

☒ Signal ports and telecommunication ports – Coupling Clamp used

Mode of Application	Observations	
	(+) Burst (kV)	(-) Burst (kV)
RJ-45(PoE)	Complied	Complied
7 pin(Alarm)	Complied	Complied

Note: “Blank” = Not performed

Observations:

Complied – No degradation of function

Test Results☒ PASS Required Performance Criteria☐ NOT PASS Required Performance Criteria**Remarks**PASS Required Performance Criteria



3.4 Surge Transients

Reference Standard

EN 61000-4-5

Test Date

Jul. 28, 2024

Test Location

EMS-Surge: Electro wave Shieldroom #7

Test Equipment

Used	Description	Model Number	Manufacturer	Serial Number	Cal. Due
<input checked="" type="checkbox"/>	EMS Test S/W	iec.control	EM TEST	5.4.8	-
<input checked="" type="checkbox"/>	ULTRA COMPACT SIMULATOR	UCS 500N7	EM TEST	P1608172950	11, 09, 2024
<input checked="" type="checkbox"/>	MOTOR VARIAC	MV2616	EM TEST	P1552169719	11, 09, 2024
<input checked="" type="checkbox"/>	CDN	CNV 508N1	EM TEST	P1610176296	11, 10, 2024

Test Conditions

Temperature: (24,8 ± 0,1) °C
Relative Humidity: (49,8 ± 0,1) % R.H.
Atmospheric Pressure: (100,1 ± 0,1) kPa



Test Specifications

AC Power Lines

Source Impedance: 12 ohm for common Mode and 2 ohm for differential Mode

Surge Amplitude :

Common Mode

☐ (0,5 / 1,0 / 2,0) kV

Differential Mode

☐ (0,5 / 1,0) kV

Number of Surges:

☐ 5 surges per angle

Angle:

☐ 0°, 90°, 180°, 270° (input a.c. power port)

Polarity:

☐ Positive & Negative

Repetition Rate:

☐ 1 surge per min ☐ 1 surge per 30 sec.

Required Performance Criteria:

☐ Complied

Other supply / Signal Lines

Source Impedance:

42 ohm for common Mode

Surge Amplitude:

Common Mode

☒ (0,5 / 1,0) kV

Number of Surges:

☒ 5 Surges

Polarity:

☒ Positive & Negative

Repetition Rate:

☒ 1 surge per min ☐ 1 surge per 30 sec.

Required Performance Criteria:

☒ Complied

**Test Data**☐ Line to Line – Differential Mode

Mode of Application	Observations	
	(+) Surge (kV)	(-) Surge (kV)
-	-	-

☐ Line to Earth – Common Mode

Mode of Application	Observations	
	(+) Surge (kV)	(-) Surge (kV)
-	-	-

Signal Lines☒ Line to Earth – Common Mode

Mode of Application	Coupling Method	Observations	
		(+) Surge (kV)	(-) Surge (kV)
RJ-45(PoE)	CDN	Complied	Complied
	LINE	Complied	Complied

Note: "Blank" = Not performed

Observations:

Complied – No degradation of function

Test Results☒ PASS Required Performance Criteria☐ NOT PASS Required Performance Criteria**Remarks**PASS Required Performance Criteria



3.5 Conducted Disturbance

Reference Standard

EN 61000-4-6

Test Date

Jul. 28, 2024

Test Location

EMS-CS: Electro wave Shieldroom #7

Test Equipment

Used	Description	Model Number	Manufacturer	Serial Number	Cal. Due
<input checked="" type="checkbox"/>	EMS Test S/W	icd.control	EM TEST	5.3.12	-
<input checked="" type="checkbox"/>	CONTINUOUS WAVE SIMULATOR	CWS 500N1.4	EM TEST	P1602169880	11, 08, 2024
<input checked="" type="checkbox"/>	ATTENUATOR	ATT 6/80	EM TEST	P1614178148	11, 08, 2024
<input checked="" type="checkbox"/>	CDN	CDN M016	TESEQ	43694	11, 08, 2024
<input type="checkbox"/>	CDN	CDN M016	TESEQ	43697	11, 08, 2024
<input type="checkbox"/>	CDN	CDN T800	TESEQ	42800	11, 08, 2024
<input checked="" type="checkbox"/>	EM CLAMP	KEMZ 801A	TESEQ	44099	11, 09, 2024
<input checked="" type="checkbox"/>	CDN	CDN T8RJ45	EM TEST	0909-09	07, 31, 2024

Test Conditions

Temperature: (24,8 ± 0,1) °C
Relative Humidity: (49,8 ± 0,1) % R.H.
Atmospheric Pressure: (100,1 ± 0,1) kPa



Test Specifications

Frequency range:

☒ 150 kHz to 100 MHz

☐ 150 kHz to 80 MHz

Voltage Level:

☐ 1 Vrms

☐ 3 Vrms

☒ 10 Vrms

Modulation:

☒ AM, 80 %, 1 kHz sine wave

☒ PM, 1 Hz (0,5 s ON : 0,5 s OFF)

Frequency step:

☒ 1 % step

Dwell Time:

☐ 1 s

☒ 3 s

Required Performance Criteria:

☒ Complied



**Test Data**☐ Input a.c. power ports

Coupling Location (Line Stressed)	Coupling Method	Observations
-	-	-

☐ Input d.c. power ports

Coupling Location (Line Stressed)	Coupling Method	Observations
-	-	-

☒ Signal ports and telecommunication ports

Coupling Location (Line Stressed)	Coupling Method	Observations
RJ-45(PoE)	CDN	Complied
7 Pin(Alarm)	Clamp	Complied

Notes: CDN = Coupling Decoupling Network
"blank" = Not performed

Observations:

Complied – No degradation of function

Test Results☒ PASS Required Performance Criteria☐ NOT PASS Required Performance Criteria**Remarks**

PASS Required Performance Criteria



3.6 Voltage Dips and Short Interruptions

Reference Standard

EN IEC 61000-4-11

Test Date

N/A

Test Location

EMS-Voltage dip: Electro wave Shieldroom #7

Test Equipment

Used	Description	Model Number	Manufacturer	Serial Number	Cal. Due
<input type="checkbox"/>	EMS Test S/W	iec.control	EM TEST	5.4.8	-
<input type="checkbox"/>	ULTRA COMPACT SIMULATOR	UCS 500N7	EM TEST	P1608172950	11, 09, 2024
<input type="checkbox"/>	MOTOR VARIAC	MV2616	EM TEST	P1552169719	11, 09, 2024

Test Conditions

Temperature:

°C

Relative Humidity:

% R.H.

Atmospheric Pressure:

kPa

**Test Specifications & Observations/Remarks****- Voltage Dips and Short Interruptions**

<u>Test Level</u>	<u>Duration [in period/ms (50 Hz)]</u>	<u>Results</u>
<input type="checkbox"/> 20 % dip	<input type="checkbox"/> 250 / 5 000	<u>N/A</u>
<input type="checkbox"/> 30 % dip	<input type="checkbox"/> 25 / 500	<u>N/A</u>
<input type="checkbox"/> 60 % dip	<input type="checkbox"/> 10 / 200	<u>N/A</u>
<input type="checkbox"/> 100 % dip	<input type="checkbox"/> 250 / 5 000	<u>N/A</u>

- Voltage variations

<input type="checkbox"/> Unom + 10 %	<input type="checkbox"/> 253.0 V (ac)	<u>N/A</u>
<input type="checkbox"/> Unom - 15 %	<input type="checkbox"/> 195.5 V (ac)	<u>N/A</u>

Observations:

Complied – No degradation of function

Degradation - See "Remarks "

Test Results

- ☐ PASS Required Performance Criteria
☐ NOT PASS Required Performance Criteria
☒ NOT APPLICABLE

RemarksRefer to 'Remarks when standards applied'.



APPENDIX A – TEST DATA

Conducted Emissions at Mains Power Ports

[HOT]

N/A



[NEUTRAL]

N/A

◆ Calculation

QuasiPeak[dBuV] / CAverage [dBuV] = Reading Value[dBuV] + Corr. [dB]

QuasiPeak / CAverage : The Final Value

Reading Value : Not shown in the table.

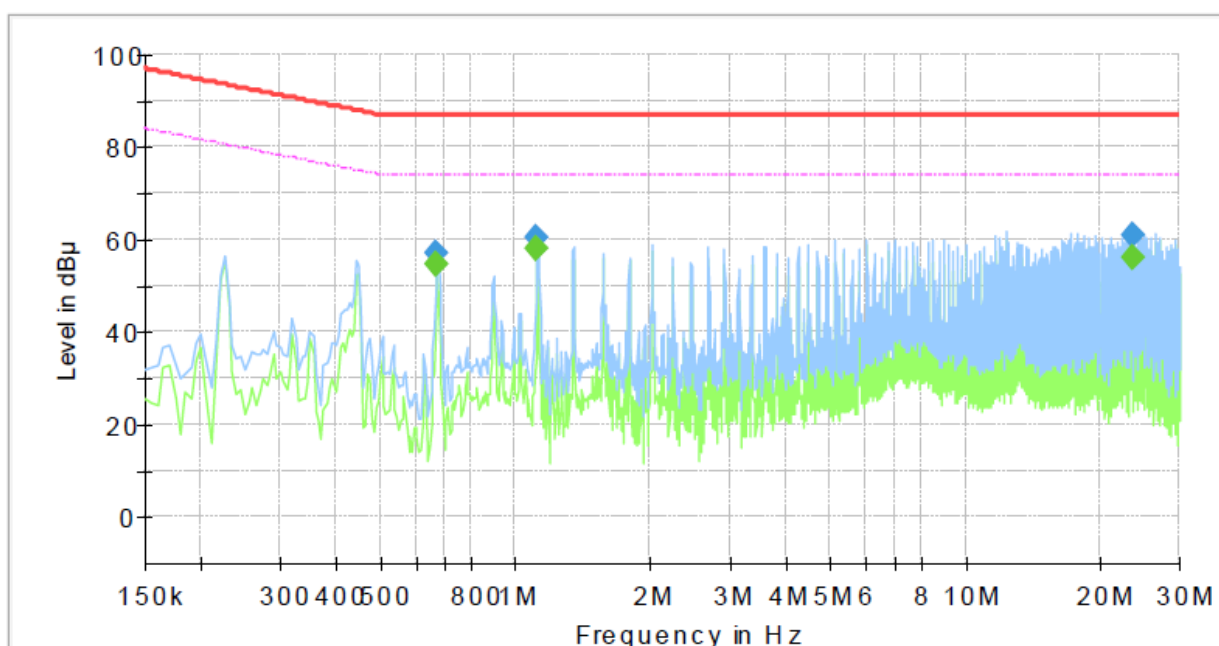
Corr. : Correction values (LISN FACTOR + (Cable Loss + Pulse Limiter FACTOR))

**Conducted Emissions at Telecommunication Ports**

[1 000 Mbps]

Common Information

Test Description: Telecommunication Emission
Job No.: KES-EM242540
Mode :
Speed : 100 Mbps
Operator Name: KES

**Final Result**

Frequency (MHz)	QuasiPeak (dBμV)	CAverage (dBμV)	Limit (dBμV)	Margin (dB)	Meas. Time (ms)	Bandwidth (kHz)	Line	Corr. (dB)
0.670000	---	54.75	74.00	19.25	1000.0	9.000	Single Line	19.6
0.670000	56.91	---	87.00	30.09	1000.0	9.000	Single Line	19.6
1.120000	---	58.00	74.00	16.00	1000.0	9.000	Single Line	19.5
1.120000	60.29	---	87.00	26.71	1000.0	9.000	Single Line	19.5
23.510000	---	55.93	74.00	18.07	1000.0	9.000	Single Line	20.3
23.510000	60.80	---	87.00	26.20	1000.0	9.000	Single Line	20.3

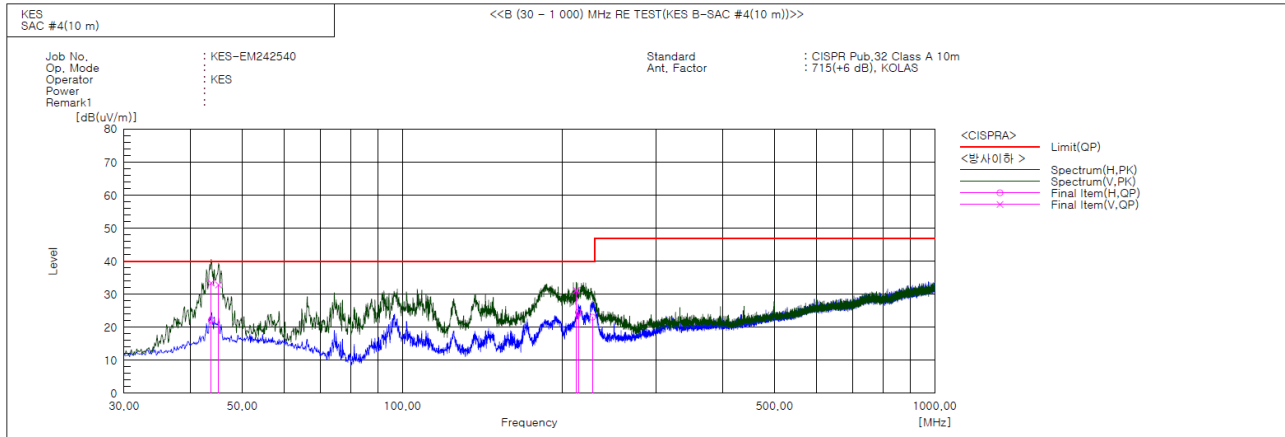
◆ Calculation

$$\text{QuasiPeak [dBuV]} / \text{CAverage [dBuV]} = \text{Reading Value [dBuV]} + \text{Corr. [dB]}$$

QuasiPeak / CAverage : The Final Value

Reading Value : Not shown in the table.

Corr. : Correction values (ISN FACTOR + (Cable Loss + Pulse Limiter FACTOR))

**Radiated Electric Field Emissions(Below 1 GHz)****Final Result**

No.	Frequency [MHz]	(P)	Reading QP [dB(μV)]	c.f [dB(1/m)]	Result QP [dB(μV/m)]	Limit QP [dB(μV/m)]	Margin QP [dB]	Height [cm]	Angle [deg]	Remark
1	43.701	V	55.2	-21.8	33.4	40.0	6.6	131.0	289.0	
2	43.744	H	43.9	-21.8	22.1	40.0	17.9	362.0	3.0	
3	45.156	V	54.3	-21.5	32.8	40.0	7.2	172.0	229.0	
4	211.974	V	51.1	-19.9	31.2	40.0	8.8	103.0	6.0	
5	214.084	H	44.2	-19.7	24.5	40.0	15.5	400.0	68.0	
6	227.395	H	42.2	-19.2	23.0	40.0	17.0	353.0	318.0	

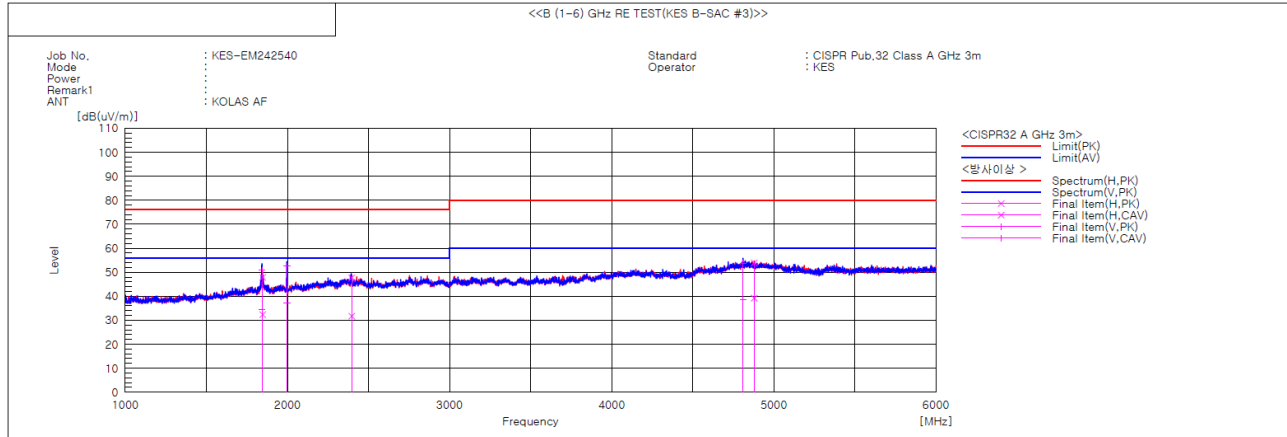
◆ Calculation

Result(QP) [dB(μV/m)] = (Reading(QP)[dB(μV)] + c.f[dB(1/m)])

Margin(QP)[dB] = Limit[dB(μV/m)] - Result(QP) [dB(μV/m)]

Reading(QP) : Reading value, Result(QP) : Reading value + Factor value

Limit(QP) : Limit value, c.f : (ANT Factor + Cable Loss - Preamp Factor), Margin: Margin value

**Radiated Electric Field Emissions(Above 1 GHz)****Final Result**

No.	Frequency [MHz]	(P)	Reading PK [dB(μV)]	Reading CAV [dB(μV)]	c.f [dB(1/m)]	Result PK [dB(μV/m)]	Result CAV [dB(μV/m)]	Limit PK [dB(μV/m)]	Limit AV [dB(μV/m)]	Margin PK [dB]	Margin CAV [dB]	Height [cm]	Angle [deg]	Remark
1	1843.024	V	47.8	31.4	3.0	50.8	34.4	76.0	56.0	25.2	21.6	100.0	214.9	
2	1847.294	H	44.9	29.4	3.0	47.9	32.4	76.0	56.0	28.1	23.6	100.0	162.9	
3	1996.507	V	48.6	33.2	4.0	52.6	37.2	76.0	56.0	23.4	18.8	100.0	175.6	
4	2396.114	H	41.3	25.3	6.4	47.7	31.7	76.0	56.0	28.3	24.3	100.0	71.5	
5	4810.621	V	37.9	22.6	15.9	53.8	38.5	80.0	60.0	26.2	21.5	100.0	354.1	
6	4879.435	H	37.8	23.1	16.1	53.9	39.2	80.0	60.0	26.1	20.8	100.0	199.2	

◆ Calculation

Result(PK/CAV) [dB(μV/m)] = (Reading(PK/CAV)[dB(μV)] + c.f[dB(1/m)])

Margin(PK/CAV)[dB] = Limit[dB(μV/m)] - Result(PK/CAV) [dB(μV/m)]

Reading(PK/CAV) : Reading value, Result(PK/CAV) : Reading value + Factor value

Limit(QP) : Limit value, c.f : (ANT Factor + Cable Loss - Preamp Factor), Margin: Margin value

**Harmonic Current Emissions and Voltage Fluctuations and Flicker****Average harmonic current results**

Hn	I _{eff} [A]	% of Limit	Limit [A]	Result
N/A				

Note: Harmonic currents less than 0.6 % of the input current measured under the test conditions, or less than 5 mA, whichever is greater, are disregarded.

* Application of limits for average is 100% except for odd harmonics from 21 to 39, where 150% applies.



Test Data - Harmonics (continued)

Maximum harmonic current results

Hn	I _{eff} [A]	% of Limit	Limit [A]	Result
N/A				

Note: Harmonic currents less than 0.6 % of the input current measured under the test conditions, or less than 5 mA, whichever is greater, are disregarded.

* Application of limits for average is 100% except for odd harmonics from 21 to 39, where 150% applies.



Test Data - Voltage Fluctuations

Maximum Flicker results

Flicker Measurements					
	Plt	Max Pst	Max Dc	Max Dmax	Max Tmax
Line 1:	N/A				
Limits:					
Results:					





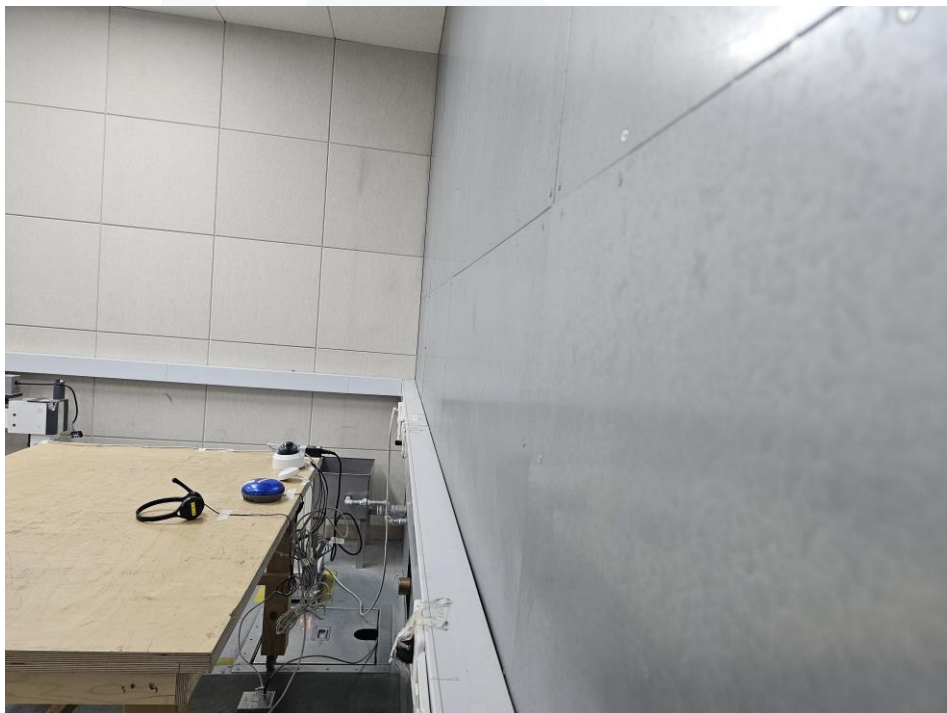
Test Setup Photos and Configuration

Conducted Emissions at Mains Power Ports

N/A

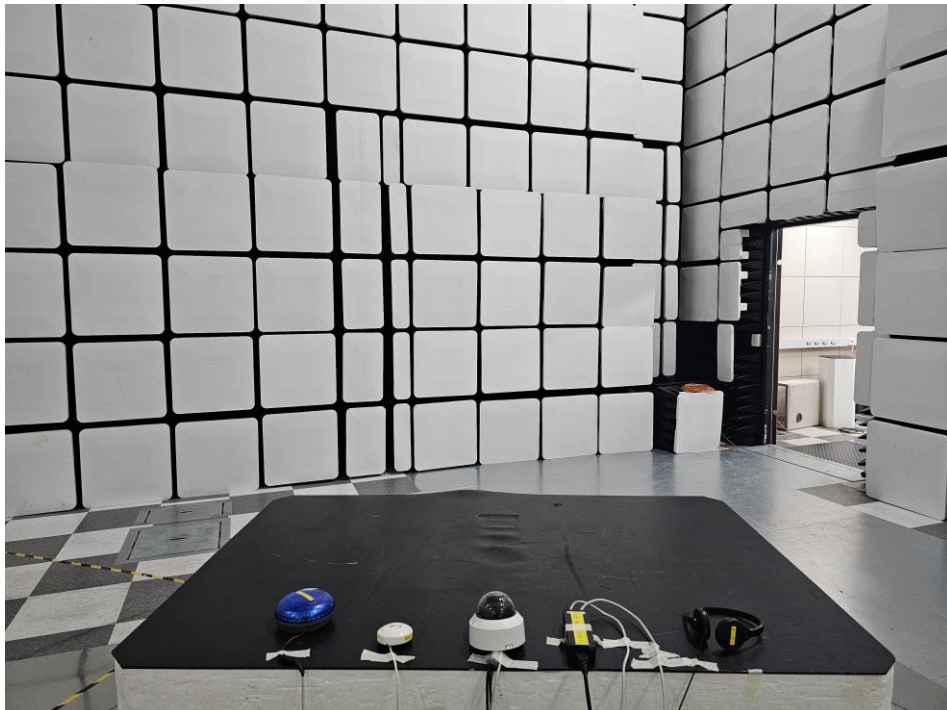
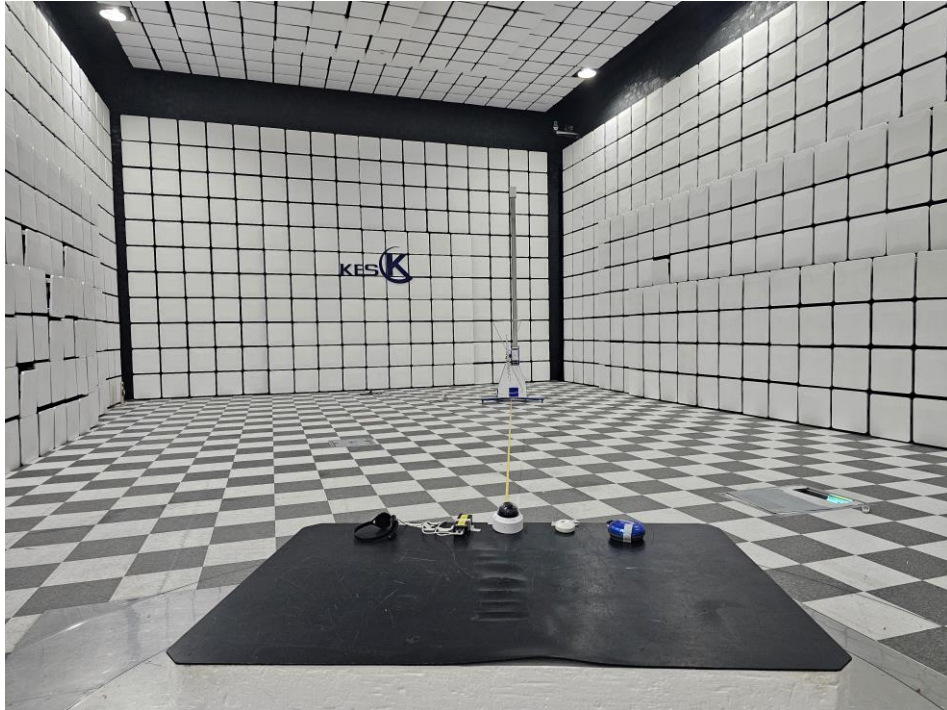


Conducted Emissions at Telecommunication Ports



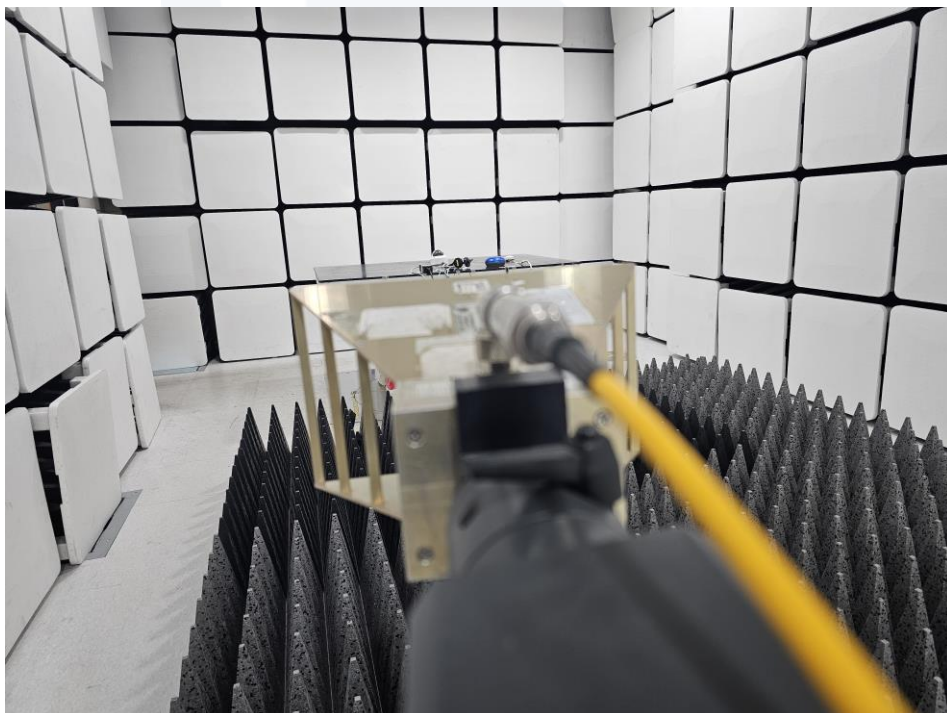
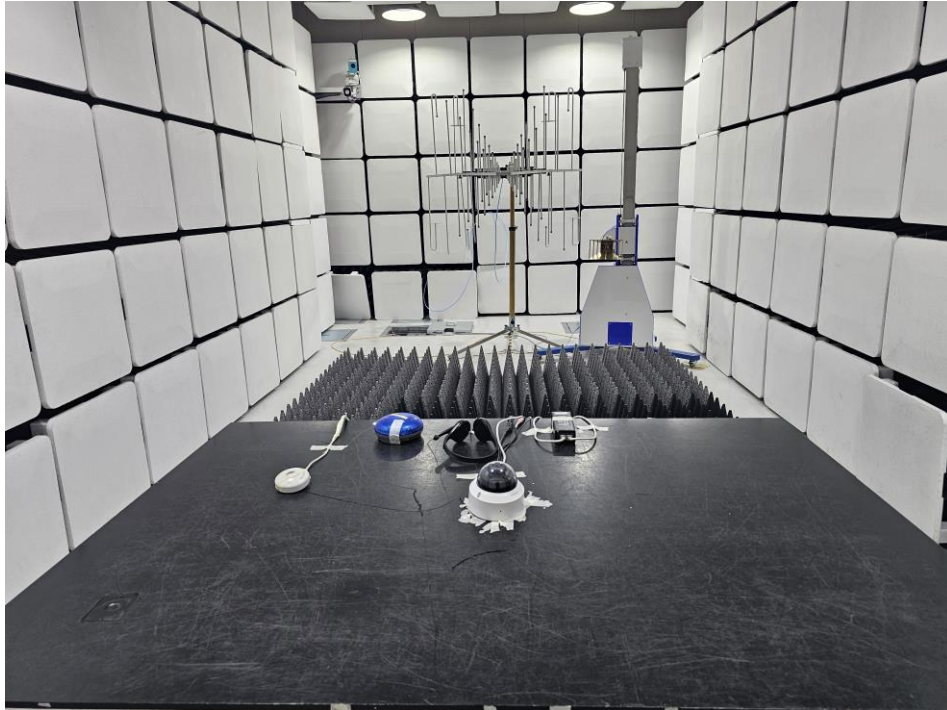


Radiated Electric Field Emissions(Below 1 GHz)





Radiated Electric Field Emissions(Above 1 GHz)





Harmonic Current Emissions and Voltage Fluctuations and Flicker

N/A

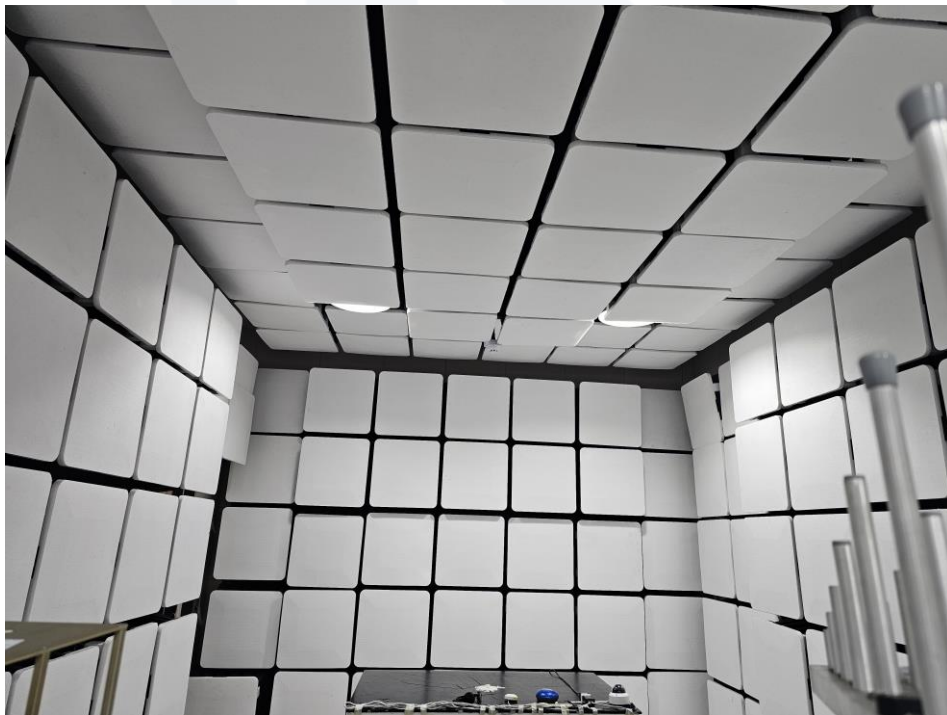




Electrostatic Discharge



Radiated Electric Field Immunity

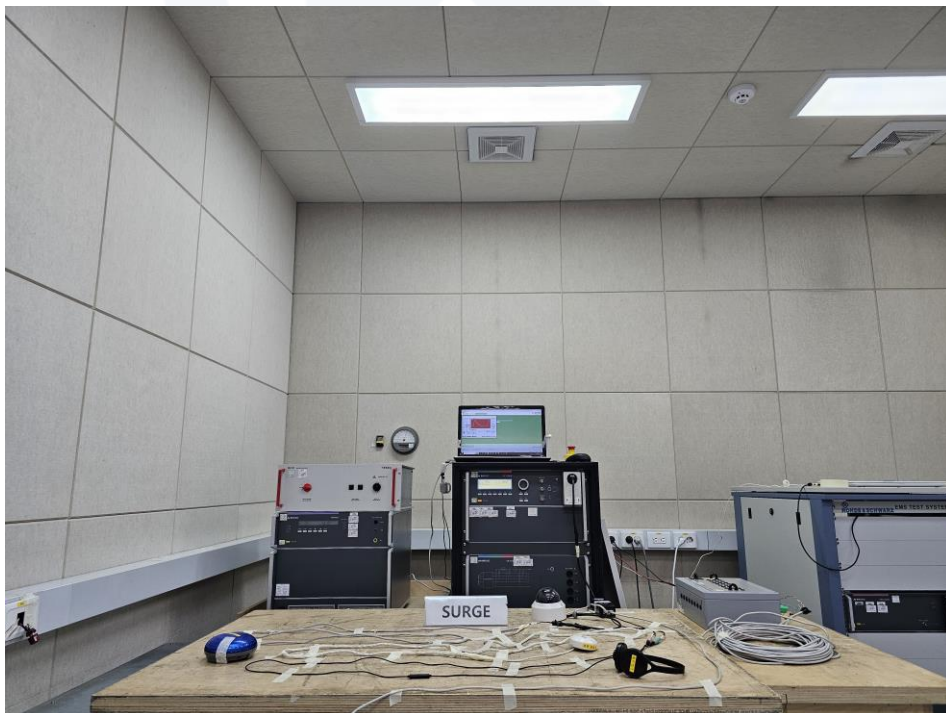




Electrical Fast Transients/Bursts



Surge Transients





Conducted Disturbance



Voltage Dips and Short Interruptions

N/A

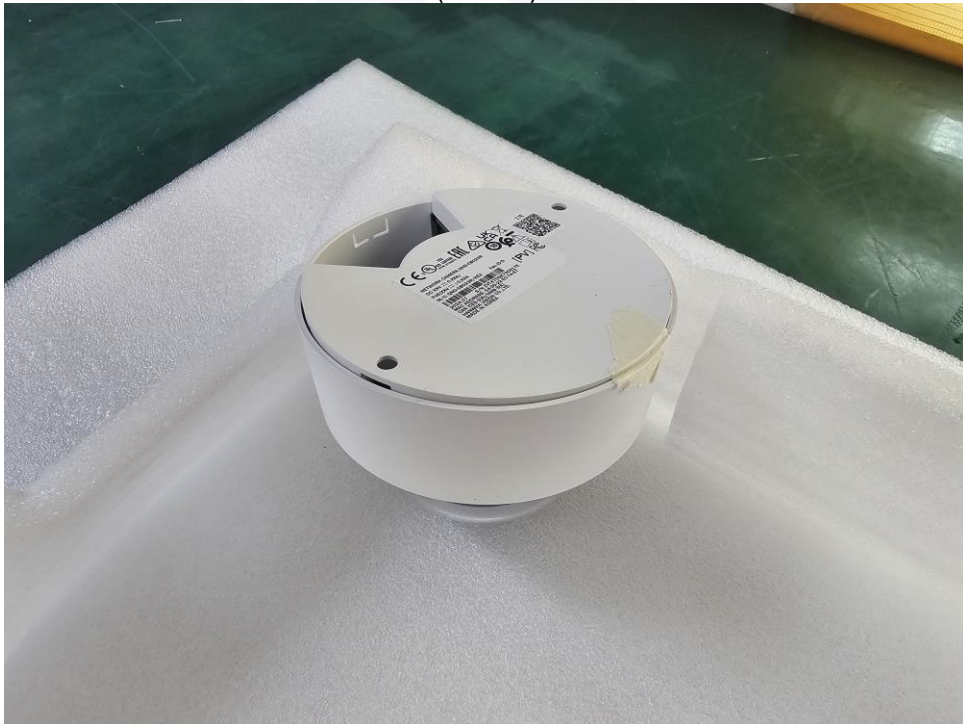


EUT External Photographs

(Top)



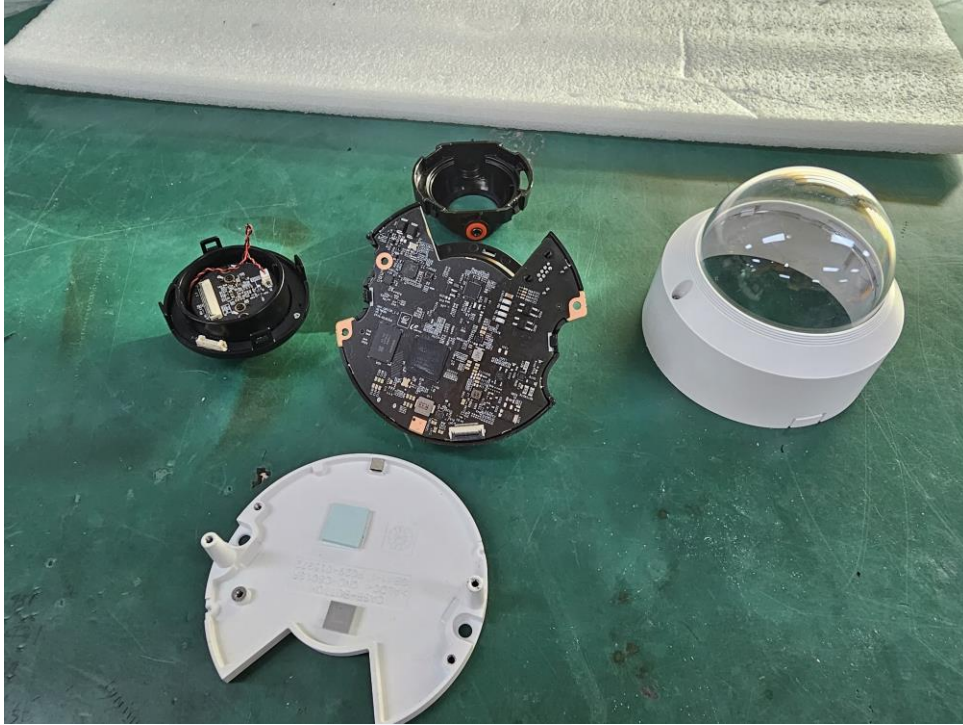
(Bottom)





EUT Internal Photographs

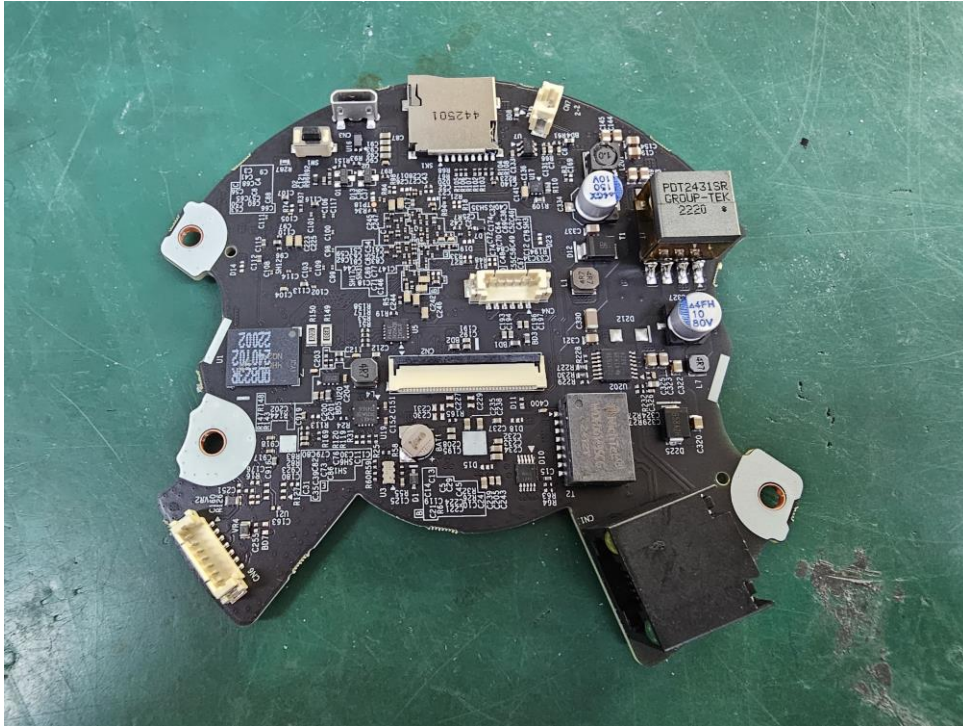
(Internal View)



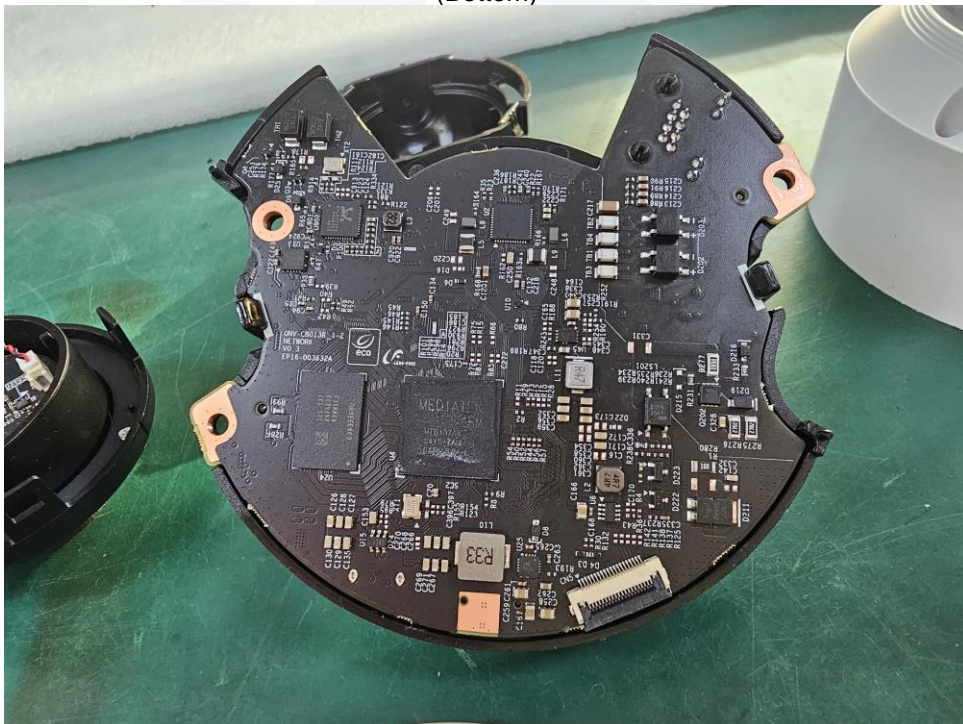


EUT Internal View – Board 1

(Top)



(Bottom)



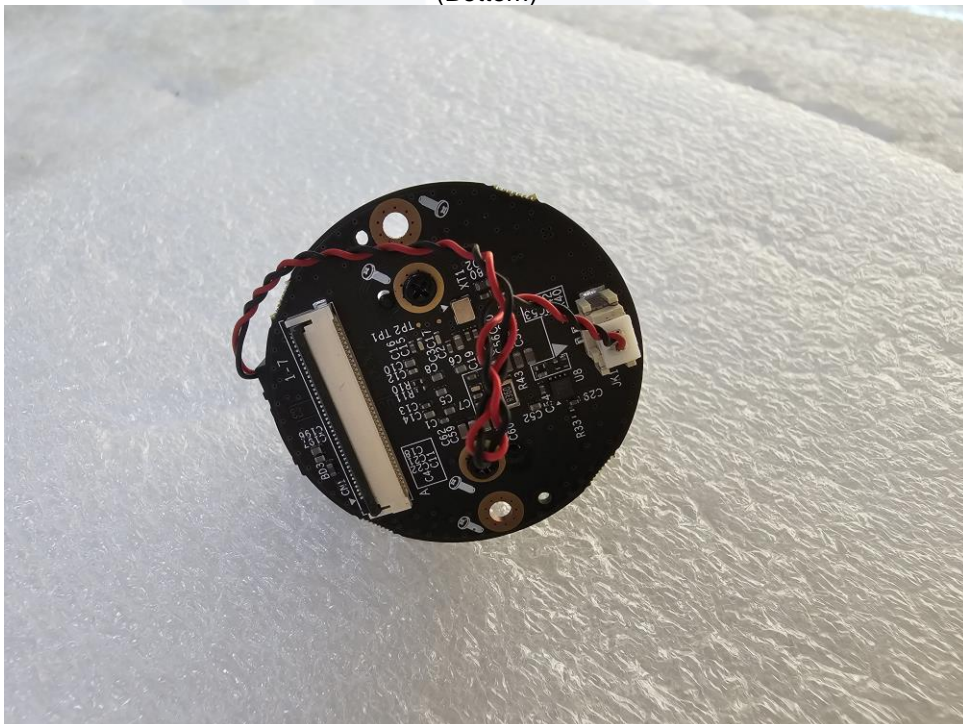


EUT Internal View – Board 3

(Top)



(Bottom)





Label and Location



NETWORK CAMERA

Model No : QND-C8023R

Manufacturer : HANVHA VISION VIETNAM COMPANY LIMITED

Made in Vietnam

